

MCSU-4 Programming Guide



Document: 158-1870-01 MCSU-4 Programming Guide.docx

Date: 31 October 2013

© Rectifier Technologies Pacific Pty Ltd

ACN 058 107 707

Contents

1. Required Hardware and Software	2
2. Programming Procedure for Display Driver, Language and Firmware files.	2
3. Programming Procedure for Configuration file.....	5

1. Required Hardware and Software

Hardware:

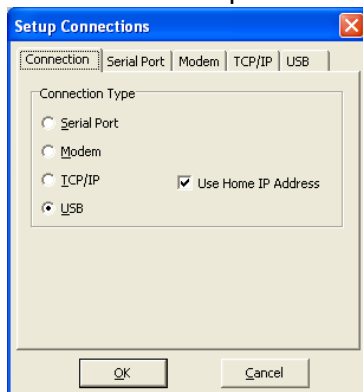
- i) PC running WinCSU-2
- ii) Powered up MCSU-4 Controller
- iii) USB Cable

Firmware and Configuration files

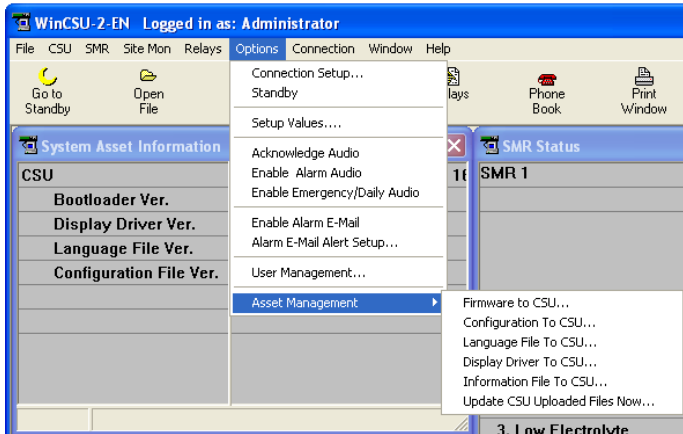
- i) Display Driver (169-xxxx-yy.DRV.BIN)
- ii) Language File (169-xxxx-YY.LNG.BIN)
- iii) Firmware File (169-xxxx-yy.APP.BIN)
- iv) Configuration File (167-xxxx-yy.CCG.BIN)

2. Programming Procedure for Display Driver, Language and Firmware files.

1. Connect PC to MCSU-4 Controller (ensure MCSU-4 is powered up) using USB cable.
2. Start Up WinCSU-2. In WinCSU-2, select your connection by selecting Options → Connection Setup. The select USB.

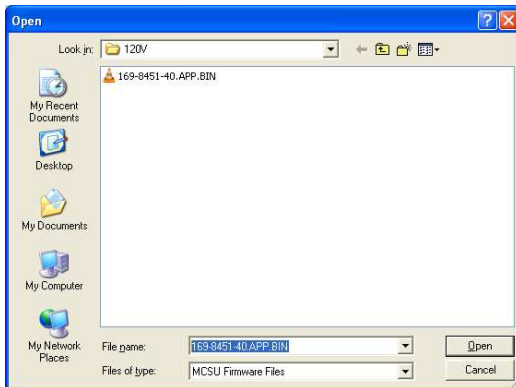


- To upload the **firmware, language, display** or **configuration** files, select **Options** → **Asset Management** and select desired option.

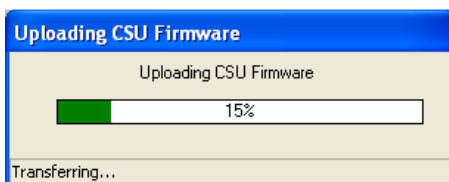


- To upload the:
 - Display Driver: **Options** → **Asset Management** → **Display Driver to MCSU**
 - Language file : **Options** → **Asset Management** → **Language File to MCSU**
 - Firmware file: **Options** → **Asset Management** → **Firmware to MCSU**

- Then select the appropriate file. Firmware files will have the **.APP** extension. Display drivers will have the **.DRV** extension. Language files will have the **.LNG** extension.

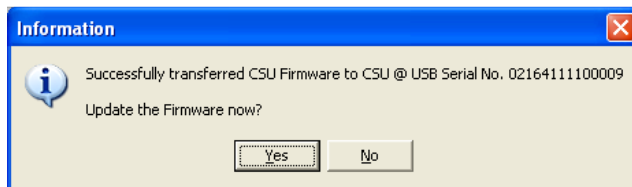


After selecting the file, you should see a progress bar indicating the transfer.



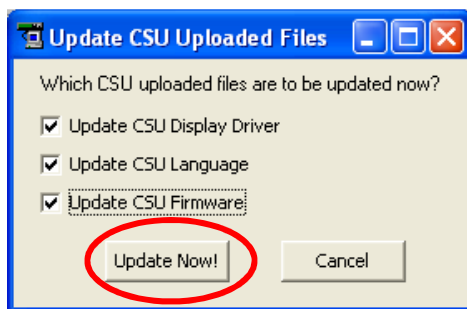
- At the end of the transfer, you should see the following dialog box. At this point, the file is successfully uploaded but NOT updated. Select 'Yes' if you do not have any other files to upload, otherwise select 'No' and repeat steps 3 to 6 for the other files.

****Please note that the MCSU-4 will re-boot and be started with the new file updated if 'Yes' is selected. You DO NOT need to carry out step 7.***



- When the file(s) has been successfully uploaded, update the MCSU-4 by selecting, **Options → Asset Management → Update MCSU Uploaded Files Now...**

Only check field indicating files that you wish to update and select '**Update Now!**'.



- The MCSU-4 will reboot and operate with the uploaded files.

3. Programming Procedure for Configuration file.

1. To upload the configuration file select **Options → Asset Management → Configuration file to MCSU**
2. Click **OK** at the completion of the file transfer.

*Please note that the information window for the configuration file upload is slightly different to that of the display driver, language and application files. At the completion of a configuration file transfer, the following window is displayed. Click OK.

